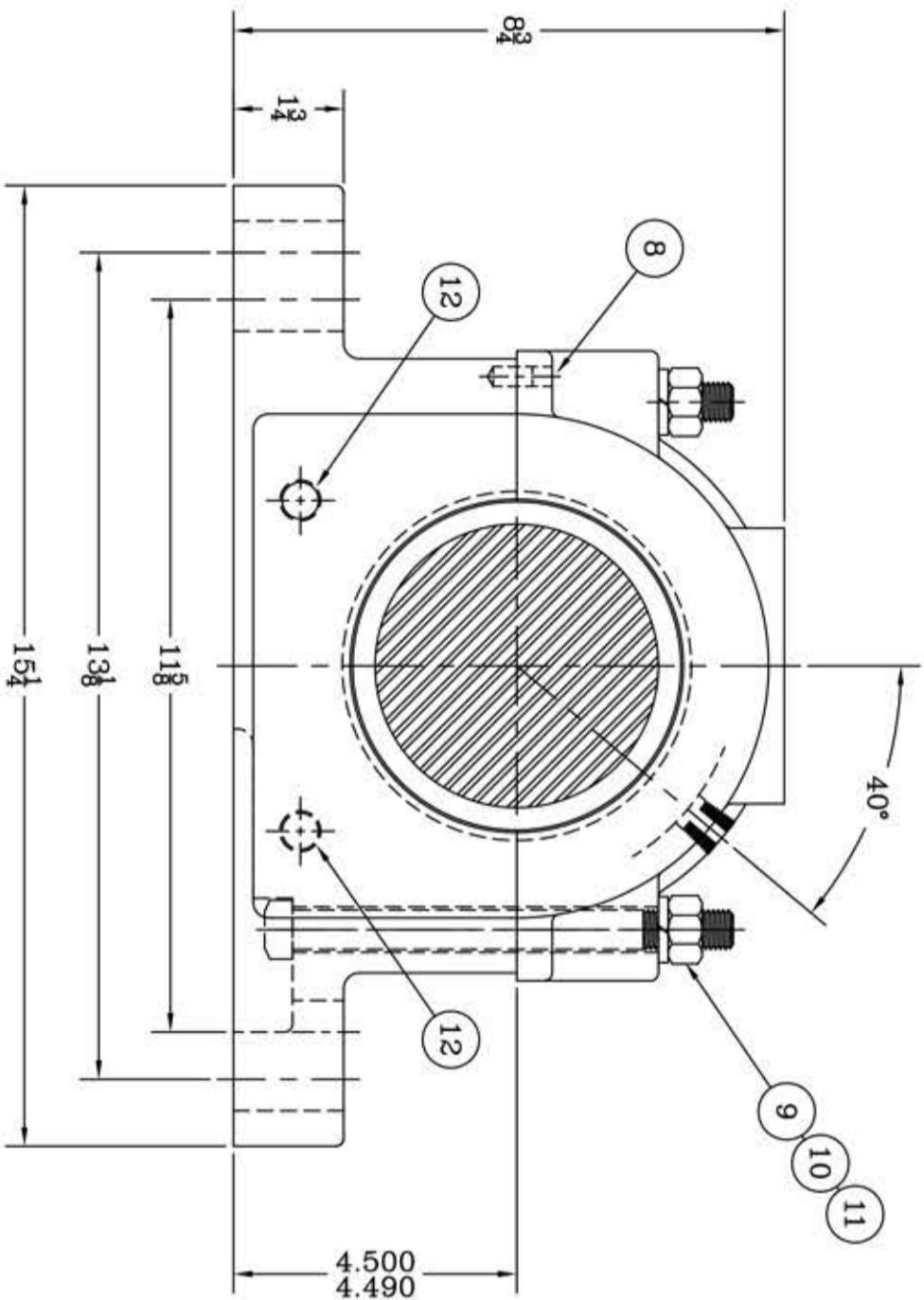
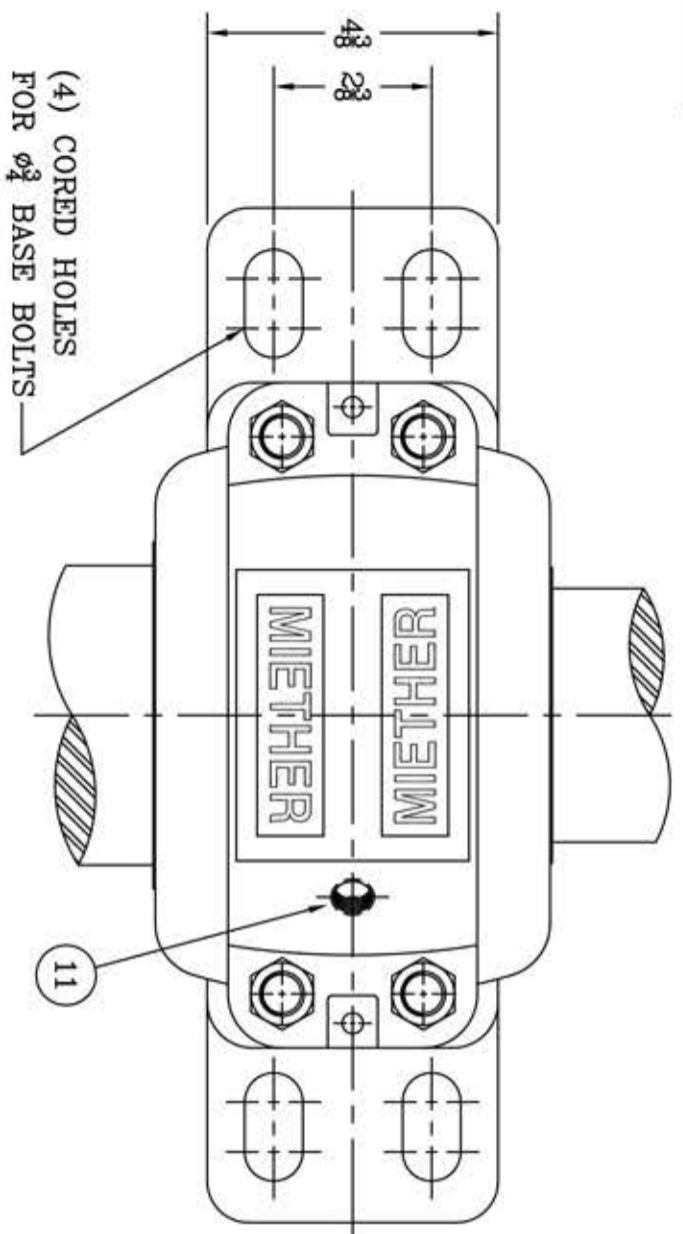
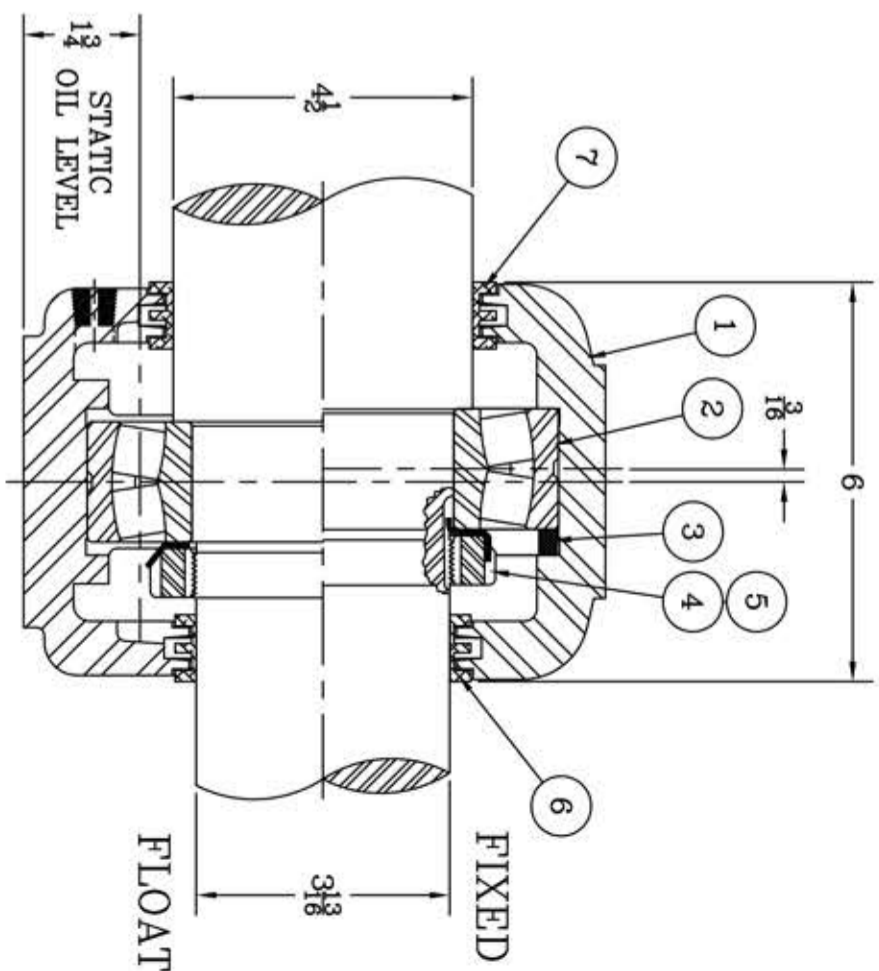


This drawing is the sole property of Miether Bearing Products and contains confidential and proprietary information. It is being provided to you for your use and may not be disclosed to any third party or used for any other purpose without Miether's prior written consent. The [materials] must be returned to the Company upon its demand. Your acceptance of these materials constitutes your acceptance of the foregoing terms.

C-14154



ITEM	DESCRIPTION	DETAIL	REQUIRED
1	HOUSING FSAF 220	C-13135	1 1
2	SPHERICAL ROLLER BEARING	22220/W-33	1 1
3	STABILIZING RING SR-20-17	A-10602	1 0
4	LOCKNUT AN-20	B-10785	1 1
5	LOCKWASHER W-20		1 1
6	TRIPLE SEAL RING LER-106	A-10578	1 1
7	TRIPLE SEAL RING LER-118	A-10498	1 1
8	DOWEL $\phi 5/8 \times 3/8$ LONG		2 2
9	CAP BOLT SQUARE HEAD $5/16 \times 11$ NC x 7" LONG		4 4
10	CAP BOLT HEX NUT $5/16 \times 11$ NC		4 4
11	LOCKWASHER $5/16$ SPLIT MED.		4 4
12	PIPE PLUG $3/8 \times 18$ NPT		3 3



REDRAWN FOR CONFORMITY RWB per KAB 4-6-05  
 REDRAWN ON COMPUTER by OMI 3-9-00

REVISIONS

SYMBOL	DESCRIPTION
C	REVISIONS
D	REVISIONS
E	REVISIONS
F	REVISIONS
G	REVISIONS
J	REVISIONS
K	REVISIONS

TOLERANCE: UNLESS OTHERWISE SPECIFIED  
 FRACTIONS  $\pm 1/32$ " ANGLES  $\pm 0^\circ 30'$   
 DECIMALS  $\pm .005$ " WELD  $\pm 1/16$ "  
 CASTING  $\pm 1/16$ "

A.I.S.I. STANDARD FINISHES

MICRO-INCH VALUE	FINISH SYMBOL
16	C
32	D
63	E
125	F
250	G
500	J
1000	K

AN ALCO INDUSTRIES COMPANY  
 BEARING PRODUCTS  
 ODESSA, TX. USA

FSAF 22220 04-08 x 03-13  
 ASSEMBLY DRAWING  
 SCALE HALF  
 DRAWN BAB  
 DATE 1/18/88  
 CHECK: C-14154  
 ASSEMBLY NO.  
 DRAWING NO.  
 C-14154